

The Guild of Creative Art Online Bulletin

620 Broad Street, Shrewsbury, NJ 07702

www.guildofcreativeart.org guildofcreativeart@verizon.net 732-741-1441

December 2023 Volume 23 Issue 12 © Guild of Creative Art 2007–2030



Register for Art Classes

The Guild of Creative Art offers classes for all ability levels in a variety of mediums.

Click on the link below to enable access to our current class schedule, as well as a summary of each class. Click on a class that you find interesting for a brief description. For more detailed information, including a list of materials and start date, please contact the teacher of the class. Teacher contact information is located on the class schedule.

For information about all classes, click [HERE](#)

Welcome New Members

Sandro Barone, Peter Bruguere
Michele Annarella, Deborah Lichtig
Jeff Rinn, Jill R. Stein, Karen Wolcott

Exhibitions Schedule

For exhibit information, including display dates, receiving dates, pick up dates, and reception schedules for all Guild exhibits, click [HERE](#).

Dates and times are subject to change.

Membership 2024 Membership Renewals Due Now

General: \$30 Associate: \$45
Exhibiting: \$80 per calendar year

Please click [HERE](#) to renew your membership online

Congratulations to our new Exhibiting and Associate who achieved an advanced membership at the November Portfolio Review:

Photographers: Exhibiting – Daniel Epstein,
Lilia Maloratskiy, and Jeff Rinn

Associate – Karen Wolcott

Exhibiting Fine Artists: Sandro Barone,
Karen Donnelly, Patrick Dorgan,
Theresa Trocchia, Kenneth Weiner

Exhibiting Fine Crafter: Patricia Zilinski

Exhibiting Sculptor: Vicki Zilaitis Stoeckel

2024 Guild Officers and Board Members

- President: David Levy
- Vice President: Barbara Russo
- Treasurer: Sheila Menendez
- Secretary: Liz Jacobelli
- Board Members: Marino Cirillo, Donna Colasurdo, Mary Fitzsimmons, MaryAnn Goodwin, Bob Stetz

Voting for this slate of Officers and Board members takes place on December 10th at the annual meeting of all Guild members.

Guild Members Meeting 2:30 - Holiday party 3:00 to 6:00 PM

December 2nd – December 22nd

All Guild Members' Holiday Show

Open to all Guild Members - All Mediums

Reception and Annual Meeting December 10th 2:30 – 6:00

- Guild Members Annual Meeting
- Board elections
- Opening Reception
- Holiday Party
- Gift Tables Selling Original Art and Artist-Made Fine Crafts
- Bin Racks of Flat Work for Sale*
- Cash and Carry Artwork for Sale*

*Available through December 22nd



Happy Holidays
by Meilun Lee – Oil on Canvas

Coming to the Guild in January 2024

Our Edgy Show

January 6 – January 31, 2024

All Guild Members

All Artistic Mediums – Juried for Ribbons

edg.y /ej.ē/ adjective: at the forefront of a trend, experimental or avant-garde, innovative, offbeat, cutting-edge, stylish and provocative

Reception: Sunday, January 7, 3:00 – 5:00 pm

Receiving: Thursday, January 5, noon – 7 pm

End-of-show pickup: Thursday, February 2, noon – 7 pm

In our Studio Gallery in January:

Artwork by students of Bob Stetz

Coming to the Guild in February 2024

Guild Exhibiting and Associate Members' Show

Reception: February 3rd – 3:00 to 5:00

Receiving: Thursday, February 1st, noon – 7:00

Pick up: Wednesday, February 28th, noon – 7:00

In our Studio Gallery in February:

Artwork by students of Sven Widen



Presidents' Message from the Guild's Co-Presidents David Levy and Barbara Russo

dlevy1939@gmail.com

bargraphx@comcast.net



2023 – The Year in Review

As the end of the calendar year quickly approaches, we thought it appropriate to present a 2023 State of the Guild Message. This information will be announced at our All Member Meeting at 2:30 on December 10th prior to the December Holiday Show reception, but much of it is worth repeating (and crowing about)! What can we say?

The Guild of Creative Art has been thriving! How might we convince you of that? To begin with, we continue to attract new members and at 370+, we are approaching pre-Covid numbers.

Our newly renovated studio and reception area, funded through an almost \$90,000 Capital Arts Grant from The New Jersey State Council on the Arts, has been a joy to teachers, students, members, staff, and visitors. These renovations are attracting new teachers and students as well.

The Guild has received thousands of much needed dollars through donations, most recently, \$2100 in award monies for our 31st Annual Open Juried Show. Many of these donations were given to the Guild as awards to memorialize loved ones lost.

We have been selling artwork at a solid pace, too, some shows to the tune of many thousands of dollars. Artwork sales provide revenue for the artist and the Guild, and joy to the purchaser, a win-win-win.

The Guild's source of income includes membership fees, classroom fees, donations, and sales, plus grants. Just this month, we received a \$7500 grant from Monmouth Arts.

A portion of this income has provided funding to upgrade our gallery lights. The new lights will be warmer and brighter than our present lights, and more in keeping with the color temperature of those in the studio.

But in addition to our fiscal health, how else might we boast of Guild successes? The answer is our community outreach. We were visited this year more than 80 times by various groups, including those with Autism, individuals with developmental and/or learning disabilities, those who are physically challenged, Assisted Living groups, professional organizations, and people who simply love art. Presentations were provided free of charge as part of our docent program. Moreover, we appreciated their plaudits, and welcomed their generous donations to support the Guild's mission to advance excellence in the visual arts.

The Guild is a community resource that reaches out to all and the word has gotten out! Our Semi-annual Portfolio Jury, held each year in May and November, resulted in over 20 artists joining and advancing to Associate or Exhibiting status. New artistic blood is coursing through the Guild's veins!

Each exhibit seems to be better and better, filled with technical prowess, originality, great compositions, and impactful messages in all styles and mediums. So taken together, we are justly proud and pleased with what the Guild has been able to accomplish this past year.

To all of you who have visited us, joined us, exhibited with us, taken classes with us, donated to our cause, or volunteered your time, we want you to know how thankful we are. It really does take a village!

2023 Guild of Creative Art Board of Directors

Officers: David Levy & Barbara Russo: Co-Presidents

Marilyn Baldi: Vice President, Sheila Menendez: Treasurer, Liz Jacobelli Secretary

Board Members: Marino Cirillo, Donna Colasurdo, Mary Fitzsimmons, MaryAnn Goodwin, Bob Stetz, Patricia Zackman

Guild of Creative Art Staff

Bill Alcaro Bulletin Editor, Art Galleries Online Producer, Coordinator of Educational Services

Vicky Culver Gallery Director

Mike Menendez Webmaster, Eyesights Juried Show Chair, Art Galleries Online

Steve Ravner Webmaster, Art News, Art Galleries Online

Audrey Lombardi Bookkeeper

Frank Remski Technology

Great sales opportunities for artists at this year's **Holiday Party & Reception!**

December 10th, 2:30 – 6:00

and throughout the month

Holiday Party Gift Tables

At this year's Holiday Party and Opening Reception, all Guild members whose dues are paid in full for the current year have the opportunity to sell items such as note cards, jewelry, pottery, scarves, fine crafts, and small portfolio pieces. All items for sale must be artist made. Sales are cash and carry. To display your work, you may bring a 4 x 4 foot table covering and use one of our tables, or bring your own table, no larger than 6 x 3 feet. There is no charge for table space. Space is limited, so reserve your spot today! E-mail the Guild at guildofcreativeart@verizon.net, or call Vicky at the Guild between noon and 3:00, Tuesdays through Fridays at **732-741-1441**.

The Guild will retain a 20% commission on all sales.

Annual All Member Holiday Show

This year's All Member Show in our Main Gallery will receive artwork on November 30th. ***Receiving opens at noon and closes promptly at 7:00 pm. No work will be accepted before or after that date and those times.*** Click [HERE](#) for Show Submission Forms to expedite your registration process. All Guild members whose dues are paid in full for the current year may enter one or two works no longer than 48 inches on any side. The entry fee is \$5.00 per piece. The show will run through December. The Guild will retain a 33.3% commission on all sales.

Exhibiting & Associate Member Lobby Show

Our lobby will feature artwork by the **Guild's Exhibiting Members** and small treasures, no longer than 14 inches on a side, by the **Guild's Associate Members**. To exhibit artwork, dues must be paid in full for the current year. A donation of \$5.00 is requested for each work displayed. Receiving and End-of-Show Pickup will coincide with the Gallery Show.

The Guild will retain a 33.3% commission on all sales.

Cash and Carry Miniature Show

The walls of the Guild Studio will feature small objects of art sized no greater than 14 inches on any side, and priced under \$100. Display space for the Miniature Show is available to all **Guild Exhibiting and Associate Members** whose dues are paid in full for the current year. Receiving for the Cash and Carry Miniature Show is concurrent with receiving for the All Member Holiday Show. There is no entry fee for the Miniature Show in the studio. The artwork will be on display for eager shoppers throughout December. Pre-register your artwork to reserve wall space and to allow time for tags to be produced. Click [HERE](#) for Show Submission Forms to expedite your registration process. Entries for the Miniature Show must be priced at \$100 or less. **Pre-registration ends on receiving day for the December show.** Due to wall space restrictions, the total number of entries and/or number per artist may be limited. To reserve a space, please e-mail the Guild at guildofcreativeart@verizon.net or call Vicky at **732-741-1441**.

The Guild will retain a 20% commission on all sales.

Bin Racks

Guild Exhibiting and Associate Members whose dues are paid in full for the current year may bring in their own bin racks to display their flat work in the studio for the month of December. There is no price limitation on bin rack artwork, and these works are Cash and Carry. Space is limited for the Bin Rack display, so the number of bin racks will be limited. To reserve a space, please e-mail the Guild at guildofcreativeart@verizon.net or call Vicky at **732-741-1441**.

The Guild will retain a 20% commission on all sales.

The Guild of Creative Art receiving team reserves the right to reject any pieces deemed inappropriate.

CALLING ALL ARTISTS

Informal Figure Drawing and Painting Workshop **with a Live Model on Tuesday Morning**

Tuesday Mornings 10:00 – Noon

- Informal figure workshop
 - Life drawing with a live model
 - Sharpen your skills
 - No instruction
 - Casual atmosphere
-
- Open to all adult Guild members
 - Non-member adults also invited
 - No pre-registration required
 - Come when you can
-
- **Cost: Guild Member \$20**
Non-Member \$25

This workshop is headed by Susan Rickman.

For info, contact Susan Rickman at
josunset59@verizon.net
or call at [908-433-7577](tel:908-433-7577)

Click [HERE](#) for information about Guild membership

Click [HERE](#) to join the Guild



Art News

The Guild of Creative Art sends out emails to Guild members and non-members who have shown an interest in our activities. **Art News** emails may contain announcements, info about up-coming events, and other Guild news. The publication of our monthly *Guild Bulletin* is also announced through **Art News**.

Everyone is welcomed to join the **Art News** email list. Click [HERE](#) to receive **Art News**

Click [HERE](#) to visit the Guild on



Sponsor Medals for Guild Exhibit Awards

Your membership to the Guild offers you the opportunity to sponsor awards for selected exhibits. You may choose the awards to be in your own name, or be titled to honor the memory or celebrate the life of a loved one. The choice is yours. You choose the medium category (painting, photography, etc.) and the quantity of awards (up to 15) that you wish to sponsor.



Click [HERE](#) to become a medal sponsor

Guild Exhibiting Members

Become a Teacher and Leave a Legacy

There is no greater gift to society than sharing your talent and knowledge with others. Leave a legacy to the art world. Become a Guild teacher. We have a few time slots open in the Guild studio for new classes. To qualify as a Guild instructor, you must be a Guild of Creative Art Exhibiting member in good standing. Your class requires approval by the Guild's Board.

Click [HERE](#) for a class proposal form

GUILD GEAR



**Guild of Creative Art
60th Anniversary
Limited Edition Tote Bags**

\$15

Designed by Guild Exhibiting Member Mike Quon

Click [HERE](#) to order Tote Bag

Guild Tees

\$25

Available at the Guild

Click [HERE](#) to request information



Guild T-Shirts

Long or Short Sleeve
White on Black
Sizes Small to 2XL



Guild T-Shirts

Long or Short Sleeve
Barn Red on Natural
Sizes Small to 2XL

We Thank Our Recent Volunteers

Building: **David Levy, Duncan Culver, Bob Stetz, Patricia Zilinski**

Chelsea Tinton Falls, Chelsea Shrewsbury Brandeis Harmony, LADACIN Network, ARC of Monmouth County x2, docent tours:
David Levy, Barbara Russo

Data entry: **Natalie Kadash, Patricia Zilinski**

Eyesights Open Juried Photography Show Committee: **David Levy, Mike Menendez, Steve Ravner, Pat Zackman**

Figure workshops: **Susan Rickman, Lisa Mandragona** Grounds: **David Levy**

Guild History Project: **David Levy, Donna Colasurdo, Natalie Kadash, Mary Polese, Suzanne Parmly**

Guild Photography Group: **Pat Zackman, Marilyn Baldi, Vince Matulewich**

Housekeeping: **David Levy, Patricia Zilinski**

Laundry: **Mary Fitzsimmons, Tina Behr**

November Gallery Show, Exhibiting and Associate Lobby Exhibit, and reception: **Leslie Backlund, Marilyn Baldi, Tina Behr, Tom Camal, Marino Cirillo, Donna Colasurdo, Rich Colasurdo, Duncan Culver, Mary Fitzsimmons, Joan Fruchter, Liz Jacobelli, Natalie Kadash, David Levy, Irene Matulewich, Vince Matulewich, Suzanne Parmly, Mary Polese, Jim Powers, Michele Rath, Patricia Zilinski**

Office: **David Levy, Liz Jacobelli, Natalie Kadash, Patricia Zilinski**

Phone calls: **David Levy**

Purchasing: **David Levy, Tina Behr, Duncan Culver, Vicky Culver**

Photography at Guild events: **David Levy, Marino Cirillo, Vicky Culver, Vince Matulewich, Barbara Russo**

SEARCH Day Volunteers: **David Levy**

Social Media: **David Levy, Jill Kaiser**

Special Events: **David Levy, Marino Cirillo, MaryAnn Goodwin, Liz Jacobelli, Bob Novak, Jim Powers, Barbara Russo, Bob Stetz**

Volunteer Recognition: **Bob Stetz**

Webmasters: **Mike Menendez, Steve Ravner**

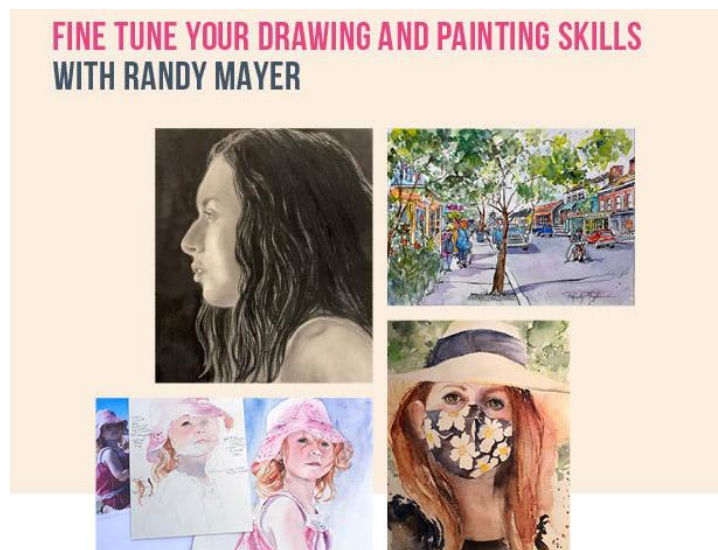
Volunteers Make the Guild Run - Here's what you can do!!!

Choose the area(s) where you can volunteer and email the appropriate chairperson

Category	Contact	Category	Contact
Front Desk/Data Entry:	Vicky Culver guildofcreativeart@verizon.net	Community Outreach:	Liz Jacobelli lizjacobelli@aol.com
Gallery Committee Chair:	Mary Fitzsimmons fitz8313@gmail.com	Grants:	David Levy dlevy1939@gmail.com
Gallery Shows: Receiving/Pickup/Hanging:	David Levy dlevy1939@gmail.com or Vicky Culver guildofcreativeart@verizon.net	Social Media:	Jill Kaiser jill@jkaiserphoto.com
Physical Plant:	David Levy dlevy1939@gmail.com	Grounds:	MaryAnn Goodwin maryanngoodwinarts@gmail.com



Artwork by Randy Mayer and students in her watercolor class adorned the walls of our studio in November.



THE GUILD OF CREATIVE ART PRESENTS RANDY MAYER'S WATERCOLOR PAINTING AND DRAWING CLASSES

Watercolor Classes: Thursdays, 11:00 AM – 1:00 PM

Drawing classes: Thursdays, 1:30PM – 3:30PM

Classes will be taught as a paint-along or draw-along.

Students are welcome to use their own references or Randy will provide them.

Randy will show you how to achieve your completed art, step by step with group and individual attention.

Classes are small to maximize one-on-one opportunities, so reserve your spot today!

Tuition

Watercolor Painting - Guild members: \$240 for 8 sessions Non-Members - \$270 for 8 sessions

Drawing - Guild members: \$240 for 8 sessions Non-Members - \$270 for 8 sessions

Guild members: sign up for both Watercolor and Drawing classes - \$200 per class of 8 sessions

Click [HERE](#) to register and pay online for Randy's class or Click [HERE](#) to print a registration form

Click [HERE](#) to contact Randy with any questions

Click [HERE](#) for Guild membership information

Member News

Marilyn Baldi's photograph, *Shepherd in the Field*, is a semifinalist in the People category in the 2023 AAA World Photo Contest.

Liz Jacobelli has been working with a crew the past few months putting together what promises to be a spectacular display of the Miniature Railroad Exhibit at the Monmouth Museum on the Brookdale campus, open until the week after the New Year.

Randy Mayer won an Honorary Award for Outstanding Pastel for her pastel painting, *Little Miss Polka Dot* in the 95th Grand National Exhibition of the American Artist Professional League. The show was on display at the Salmagundi Club in NYC in November.

Mike Quon is exhibiting his artwork through January 24th in an exhibition titled *Modern Panoramas* at the Gallery on Grant / Axelrod PAC, in Deal. Mike also exhibited in a two-person show with Christopher Mac Kinnon at the Guild of Creative Art in November.

Barbara Russo will show her piece, *Orbs on Display*, in the Monmouth Arts exhibit, *Reinvention* at the Long Branch Arts and Cultural Center through November.



Shepherd in the Field
by
Marilyn Baldi



Orbs on Display
by
Barbara Russo



Liz Jacobelli's
Railroad display



Little Miss Polka Dot
by
Randy Mayer

Next Portfolio Jury for Advanced Membership

May 16 – 18, 2024

Become a Guild of Creative Art Associate or Exhibiting Member at our next Semi-Annual Portfolio Review

Enjoy the benefits of advanced Guild memberships

For information & application, click [HERE](#)

Please note: Member News is designed to announce exhibits displaying Guild of Creative Art members' work, and/or honors our members receive. Advertisements and information regarding "for profit" ventures are not permitted and will not be included. News items and associated jpg images will be edited for space and content. There is a maximum of three news related items per person in each issue unless space allows more. Items may be grouped if several Guild members are participating. Submissions received close to deadline will only appear if space is available

Send us a jpg image of your member News related artwork. Images must be in jpg format. Save your jpg image as follows:

Your Last Name_Your First Name_Title of Artwork_Medium Example: Tist_Arthur_Gifted and Talented_Pastel

Space is limited. Non-conforming or objectionable images, as determined by the Guild, will not be published.

Click [HERE](#) to submit member news items for the upcoming Bulletin with or without an image.

The Guild of Creative Art bulletin staff strives for complete accuracy in the content of our bulletin. We deeply regret any omissions or incorrect information.

To report a correction, email us at bulletin@guildofcreativeart.org

Important:

- The Guild of Creative Art (the Guild) specifically disclaims any liability for the loss, damage, or theft of any artwork exhibited or stored on the Guild's premises. Artists are responsible for insuring their own work from delivery to pick up and return to artist.
- By submitting artwork or JPEG files to the Guild of Creative Art, you are granting permission for these files to be utilized for promoting shows, exhibits, and any additional promotional activities sponsored by the Guild, as well as use in the Guild's Bulletin. Further, the copyright for any submitted JPEG files remain with the submitting artist.

Recent Docent Tours



Chelsea Shrewsbury – October 24

Guild Docent and Co-President, David Levy, leads the discussion about artwork from the October Open Juried Show



ARC – Nov 8

Guild Docents and Co-Presidents, Barbara Russo (left) and David Levy (seated) hosted guests from ARC for a Docent presentation



Brandeis Harmony – October 25

Artist Sven Widen (right) joins Docent David Levy to discuss his watercolor painting, *Harlequin Halo*, for the Brandeis Harmony Docent Tour



Chelsea Tinton Falls – November 9

David Levy discusses Mike Quon's *Green Crab* painting with guests from Chelsea Tinton Falls.



"OMG (Our Men's Group)" – October 31

David Levy conducts a Docent Tour of artwork from the Open Juried Show for "OMG"



ARC – November 15

Guests from ARC of Monmouth County are treated to a tour of the two-man show in our gallery by Mike Quon & Chris Mac Kinnon. David Levy and Barbara Russo led the discussion of the artwork.



LADACIN – November 14

David Levy instructs visitors from LADACIN Network in creating 3-dimensional shapes during their docent tour of the Guild.

GUILD OF CREATIVE ART

620 Broad Street, Route 35, Shrewsbury, NJ 07702

Telephone: 732-741-1441

Email: Guildofcreativeart@verizon.net

Web Site: www.guildofcreativeart.org

Original Art Work on Display

The oldest and largest art community in New Jersey, the Guild of Creative Art, is a non-profit organization dedicated to advancing excellence in the visual arts through teaching, exhibits, workshops, and special events.

The Guild features:

- **New Exhibits each month – Open to the public with free admission**
- **A wide series of Fine Art Courses and Workshops for adults, teens, and children**
- **Fine artwork in various disciplines from local and regional artists**
- **A premier source of original art at affordable prices**
- **Independent gallery space rental for Exhibiting Member artists**
- **Docent Tours and Presentations available free of charge**
- **Gallery Hours: Tuesday through Friday: 8:00 – 4:00, Saturday: 10:00 – 3:00** (subject to change)

Guild of Creative Art Membership

Membership offers:

- entry in "All Members'" exhibits
- discounted entry fees for specific Guild Shows
- discounted tuition for Guild classes, workshops, & more
- the opportunity to exhibit in the monthly lobby show (Exhibiting and Associate members only)

The Guild of Creative Art survives fiscally on generous donations from our members, proceeds from our workshops and classes, commissions from the sale of artwork, fundraising events, and member dues.

Guild Membership Dues

**All membership dues expire each year on December 31st.
Membership renewal dues are to be paid by January 1st of each calendar year.**

Annual Membership Dues:

General \$30, Associate \$45, Exhibiting \$80

Renewal is easy. Options:

1. Click [HERE](#) to pay your dues online
2. Click [HERE](#) to print a blank membership form to complete and mail to the Guild with a check (no cash by mail)
3. Call 732-741-1441 to pay with your credit card
4. Pay at the Guild with cash, check, or credit card

Guild Fees

Gallery Commissions on Artwork Sales:

Sales on Guild premises: 33¹/₃%

Off-site sales: 20%

Gallery rental, hanging, & tags: \$500

Portfolio Pieces, Cards, Jewelry, Books, Fine Crafts: 20%

Instructors: 30% of Member Tuition

100% of non-member surcharge

Legacy and Friend Donations

Two Ways You Can Help the Guild

LEGACY PATRON: is a Guild member who bequeaths in their last Will and Testament \$10,000 or more to the Guild of Creative Art

LEGACY BENEFACTOR: bequeaths \$5,000 to \$9,999

A LEGACY MEMBER \$1000 to \$4999 to Guild of Creative Art

FRIEND OF THE GUILD GOLD LEVEL donates \$5,000+ to the Guild

FRIEND OF THE GUILD SILVER LEVEL donates \$3,000 to \$4,999

FRIEND OF THE GUILD BRONZE LEVEL donates \$500 to \$2,999

FRIENDS OF THE GUILD: members who donate money to the Guild

Donations received honoring deceased Guild members in the amounts shown above are also eligible to be designated a FRIEND OF THE GUILD.

For more information on either topic, please contact:
Marilyn Baldi mmbrc8@verizon.net

Click [HERE](#) to make a donation to the Guild



See something you like?

Artwork on display in our galleries at the Guild of Creative Art, as well as our off-site shows and our online presentations, is for sale. For information regarding the purchase of artwork, click [HERE](#).

(Pictured) *Sail Out to Sea* by Mike Quon – Acrylic on Canvas

A Glimpse at
Different Strokes... and More
A Multi-Media Exhibit featuring artwork by
Christopher Mac Kinnon & Mike Quon



Off the Hook by Christopher Mac Kinnon – Acrylic



Garden Flower by Mike Quon – Acrylic on Canvas



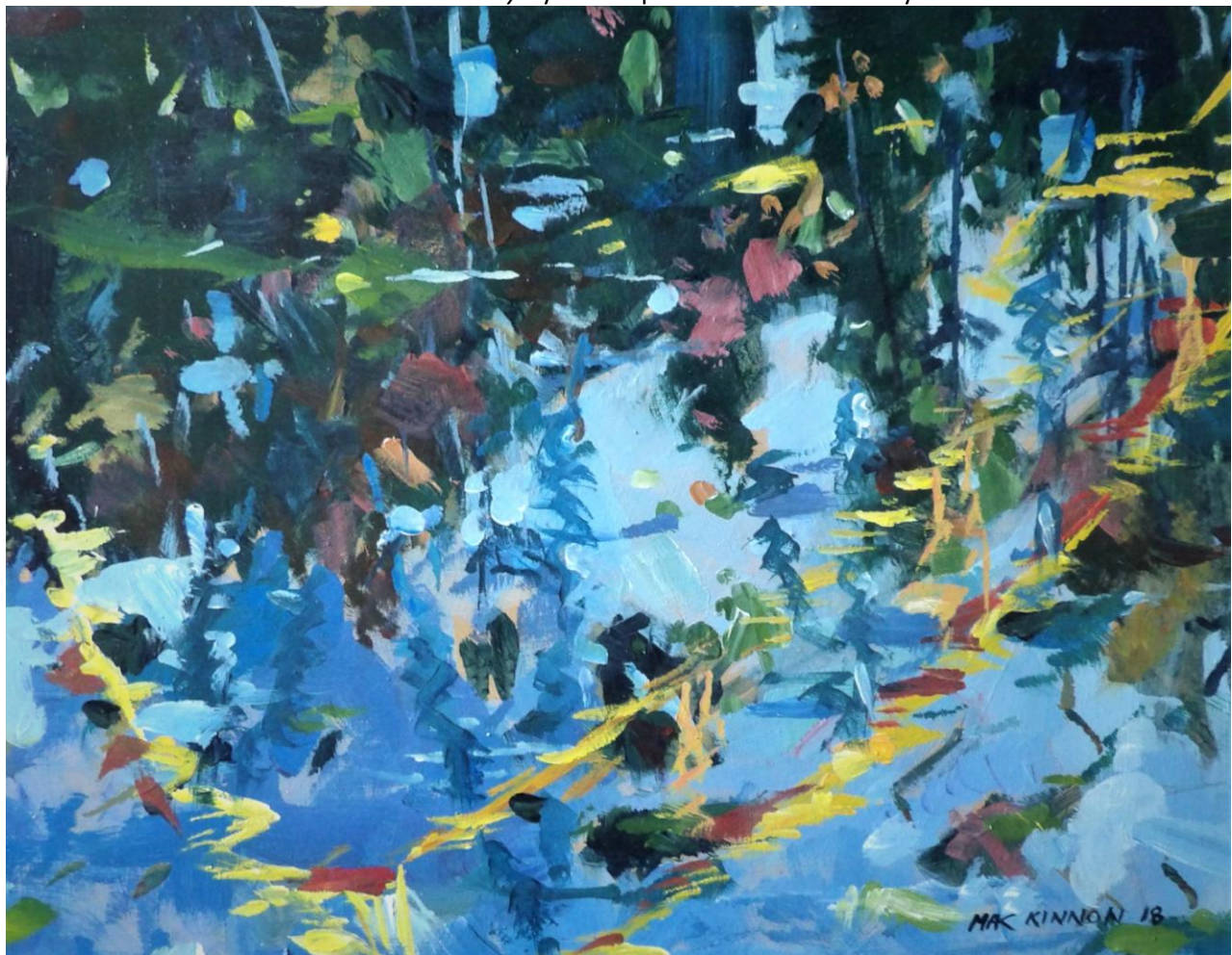
Mona Lisa Remix by Mike Quon – Acrylic on Canvas



Elephant Walk by Christopher Mac Kinnon – Mixed Media



Monet's Gone Gray by Christopher Mac Kinnon – Acrylic



Nitro Reflections by Christopher Mac Kinnon – Acrylic



Make Mine Music by Mike Quon – Combined Media/Printed Collage Paper



Small Teapot by Christopher Mac Kinnon - Clay



Sleeping Alien by Christopher Mac Kinnon – Photo Collage



Retro Manual Typewriter by Mike Quon – Combined Materials



Asbury Park Convention Hall by Mike Quon – Acrylic on Canvas



Nine Inch Mirror by Christopher Mac Kinnon – Ceramic



Laughing At... Not With by Christopher Mac Kinnon – Acrylic



Surf's Up by Mike Quon – Acrylic on Canvas



Top: Vase by Christopher Mac Kinnon – Ceramic Bottom: *Summer's Last Fling* by Christopher Mac Kinnon – Acrylic on Canvas





Top: *Asbury Park Boardwalk* by Mike Quon – Acrylic on Canvas Bottom: *Twin Bicycles* by Mike Quon – Acrylic on Canvas





NYC Remix by Mike Quon – Acrylic on Canvas



Troubled Waters by Christopher Mac Kinnon – Inks & Markers

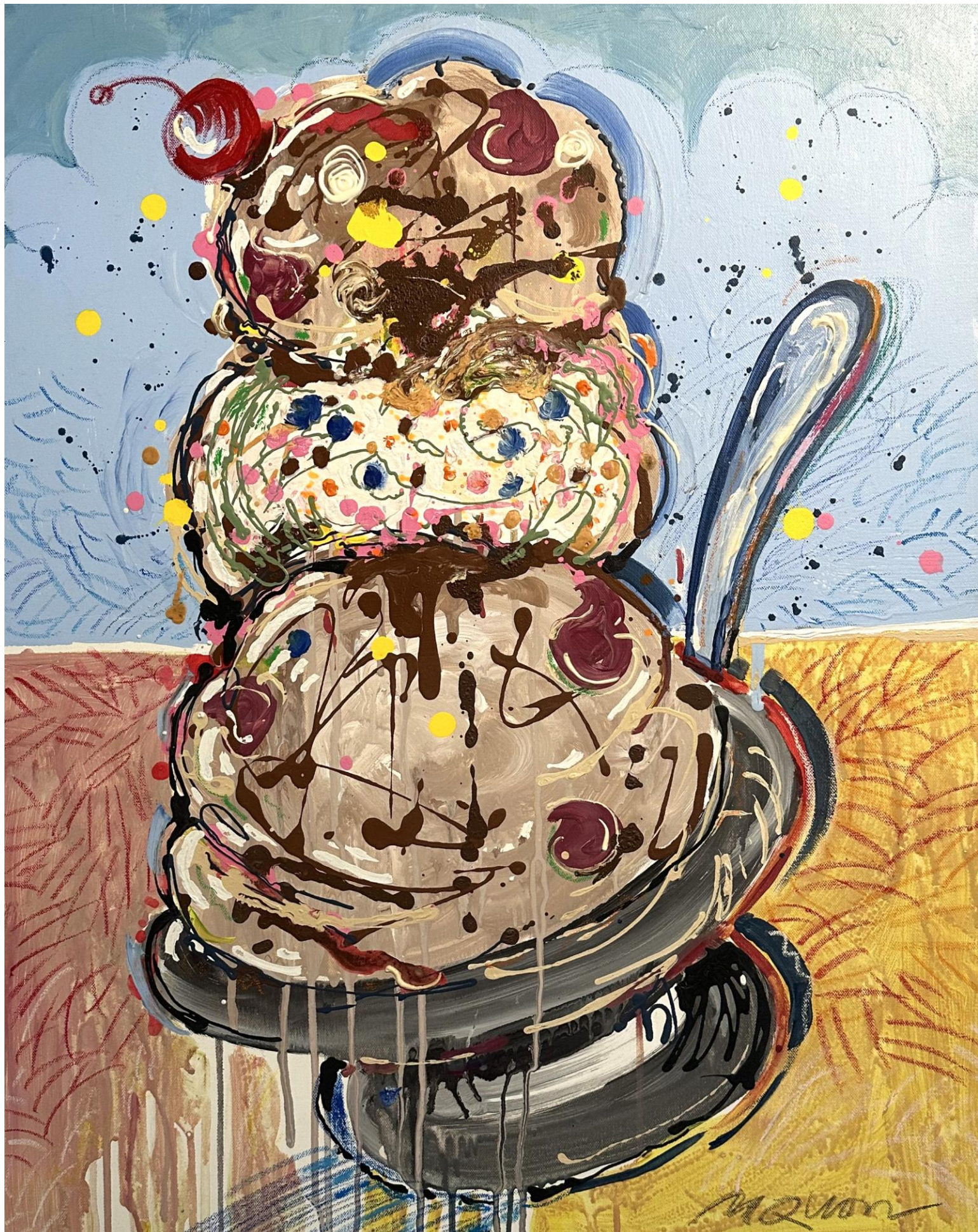


Top: *Green Crab* by Mike Quon – Acrylic on Canvas Bottom: *Koi Fish* by Mike Quon – Acrylic on Canvas

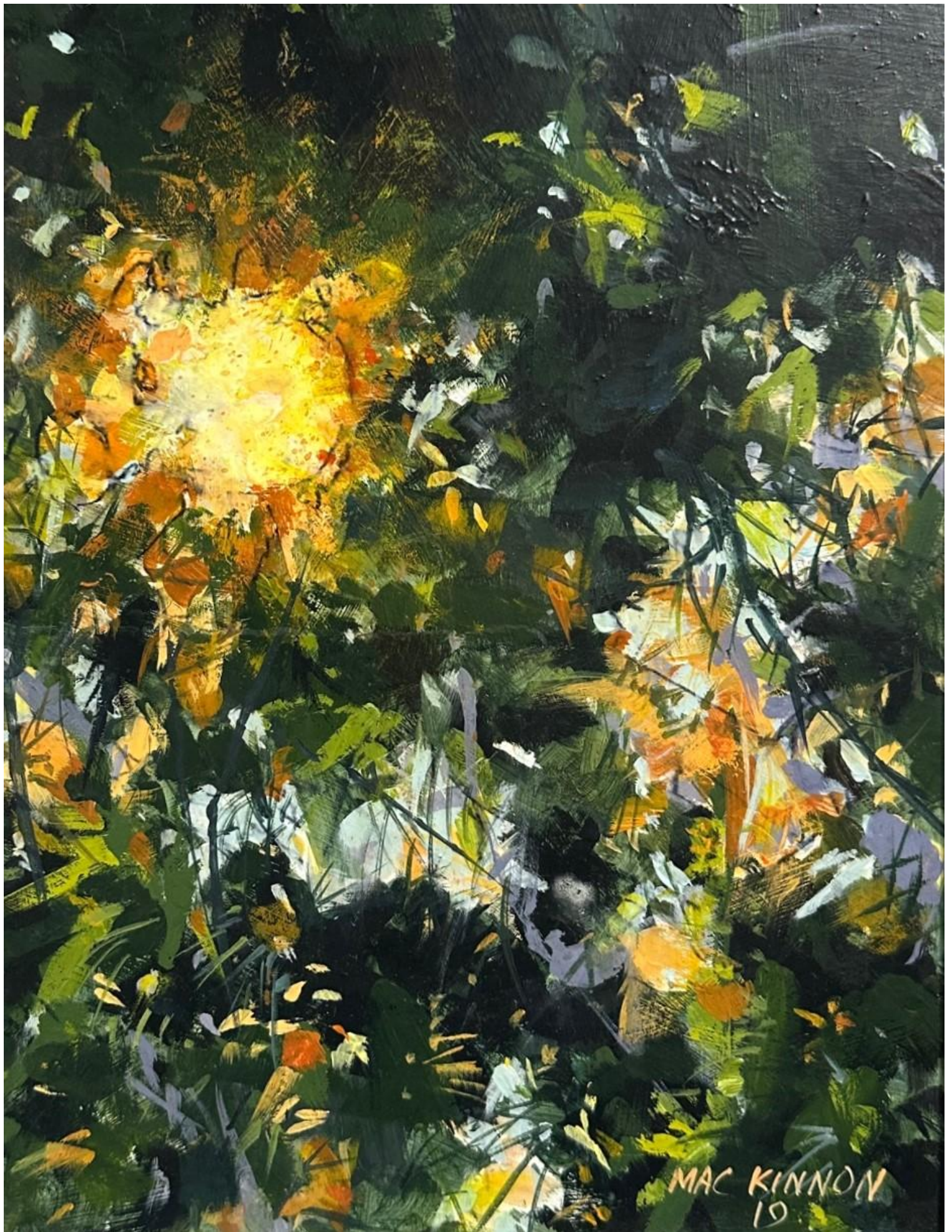




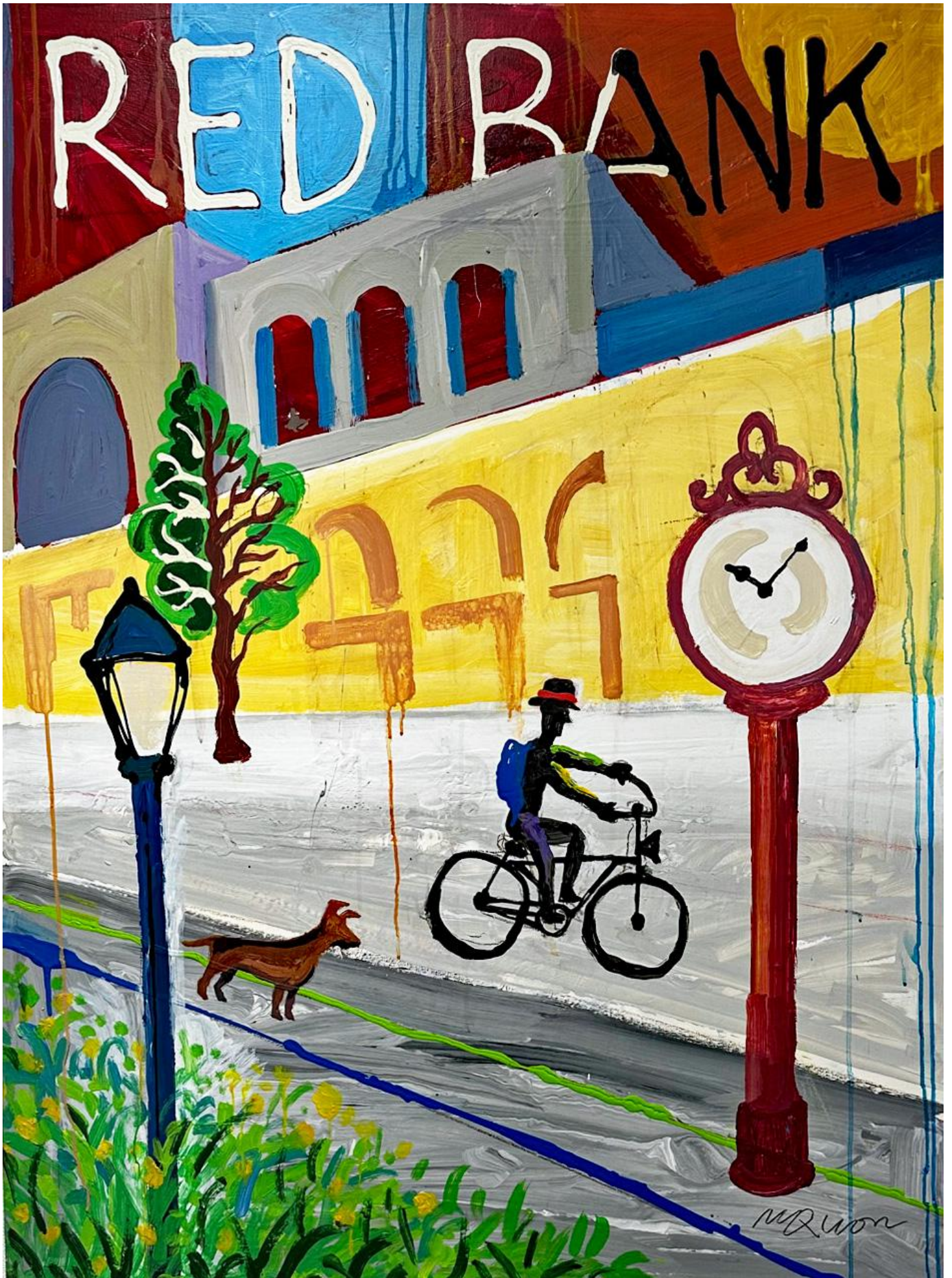
Beyond the Pines by Christopher MacKinnon – Acrylic on Board



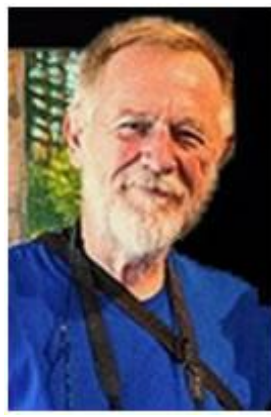
Ice Cream Sundae by Mike Quon – Acrylic on Canvas



Break on Through by Christopher Mac Kinnon – Acrylic on Board



Afternoon Bike Ride in Red Bank by Mike Quon – Acrylic on Canvas



Original Oil Paintings by Sven Widen

Sven Widen: Mastering the Media of the Masters

Adults and Teens – All Mediums including Oil Painting

This class is a studio course in oil painting for adults and teens ages 12 and older. Students will learn techniques, materials and substrates of classical, Old Masters, and contemporary oil painting. They will work from still life set ups, although working from a photo reference will be accommodated and used to its greatest benefit. The prime goal of this class is for each student to have a hands-on understanding and familiarity with the media, ultimately to find their own style and voice. Select the time frame that works for you:

2 hour class x 4 sessions: \$128 - 2.5 hour class x 4 sessions: \$160 - 3 hour class x 4 sessions: \$192

Non-Members of the Guild add \$30 to listed price (*non member fee may be applied to a \$30 Guild General Membership*)

Click [HERE](#) to register and pay online for this course

For more information, click [HERE](#) to contact Sven



Watercolor from Concept to Completion

Robert J. Stetz

← Original watercolor paintings by Bob Stetz →

Age Group: Adults Tuesdays from 1:00 – 3:00

Six classes per session

\$240 Guild for members – \$270 non-members

(*non member fee may be applied to a \$30 Guild General Membership*)

Click [HERE](#) to register and pay online



Sentinals
Original pointillist oil painting
by Leslie Backlund

Drawing & Painting

All Media with Leslie Backlund

11 year olds to adults

Leslie Backlund is a long time member of the Guild of Creative Art serving as President for several terms. A member of the Pastel Society of America, she is also a distinguished master of many media and styles, including pointillism, which has earned her several awards. She has a degree in elementary education, which helps her bring out the talent and creativity in her students, young and old.

Leslie provides individual attention to students of all levels of interest and ability, from age 11 to adults. Students learn drawing, composition, and color theory while working on their own choice of subject matter. Students also have the opportunity to participate in exhibitions exclusive to Leslie's students. She also offers a portfolio review for art majors preparing for college.

Location: Guild Studio Time: noon – 2:00 pm, Saturdays

Cost per lesson: \$35 members Age 18+ / \$38 non-members over 18

Tuition includes basic art supplies.

Call 732-690-2160 for info lesliebacklund@gmail.com

To register call: 732-741-1441 or click on a link below

Click [HERE](#) to register and pay online for this course



The Guild of Creative Art's
21st Annual Open Juried Photography Show
is coming soon!

Open to Guild Members and Non-Members

The online registration period is January 1 to January 31, 2024

Online submission is the only way to register.
There will be no paper registration form.

Receiving of conditionally accepted artwork is one day only:
Wednesday, February 28, 2024, noon to 7 pm

Over \$1,500 in Awards

Exhibit Dates: March 2 to March 27, 2024
Reception and Awards Ceremony
Sunday, March 3, 2024

The Guild of Creative Art thanks Monmouth Arts for its support



This program is made possible in part by funds from Monmouth Arts,
a partner of the New Jersey State Council on the Arts, and
the Monmouth County Board of County Commissioners.